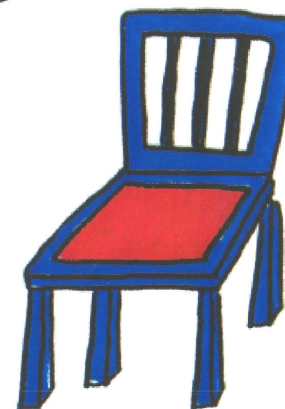
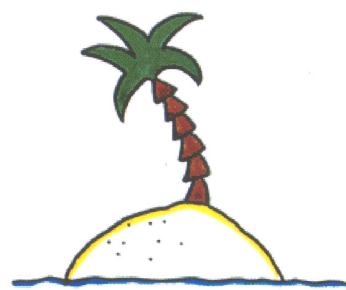
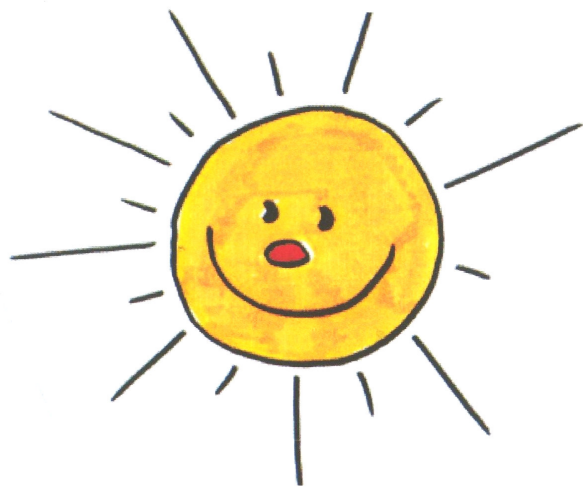
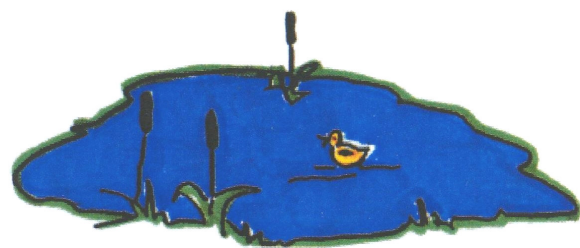
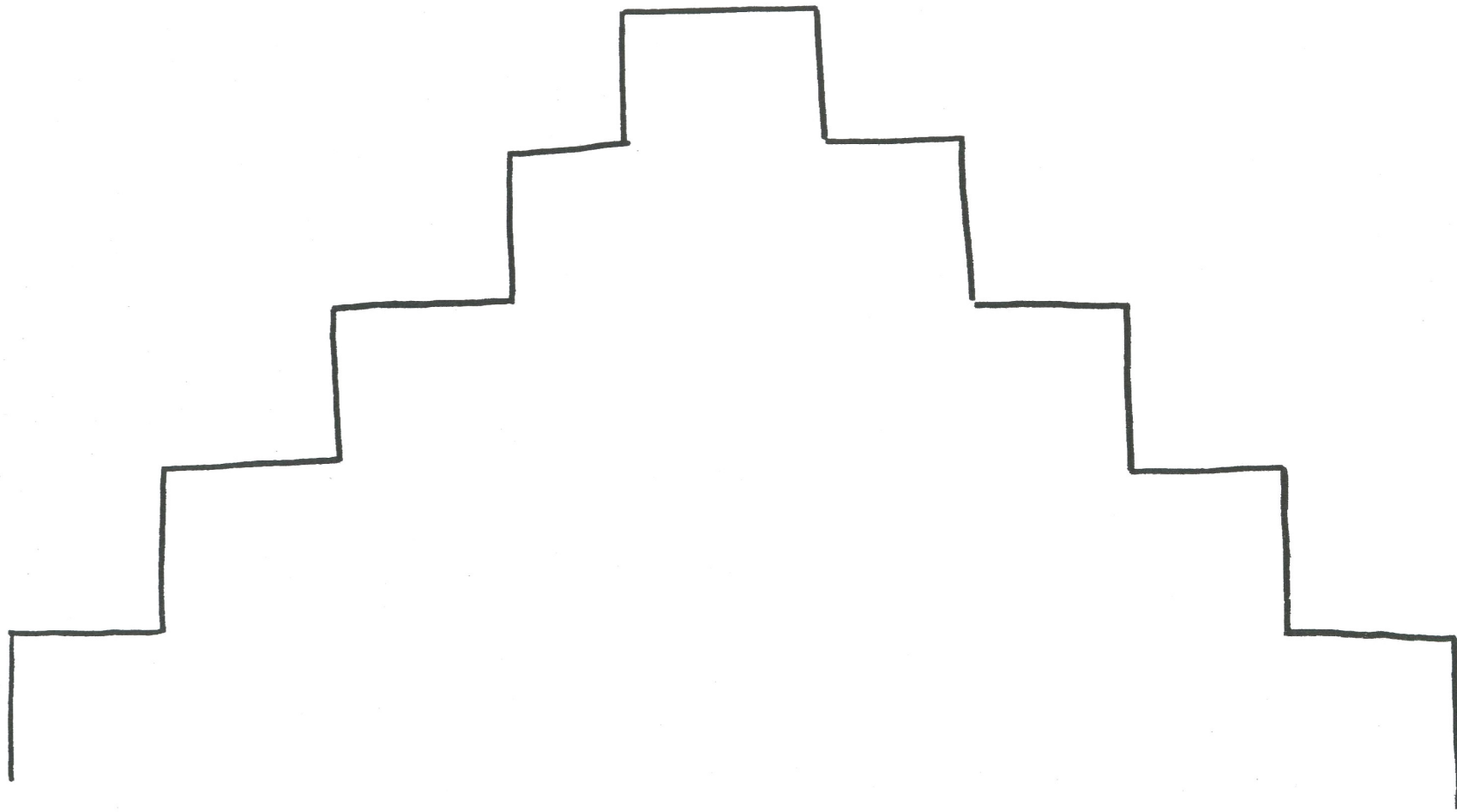
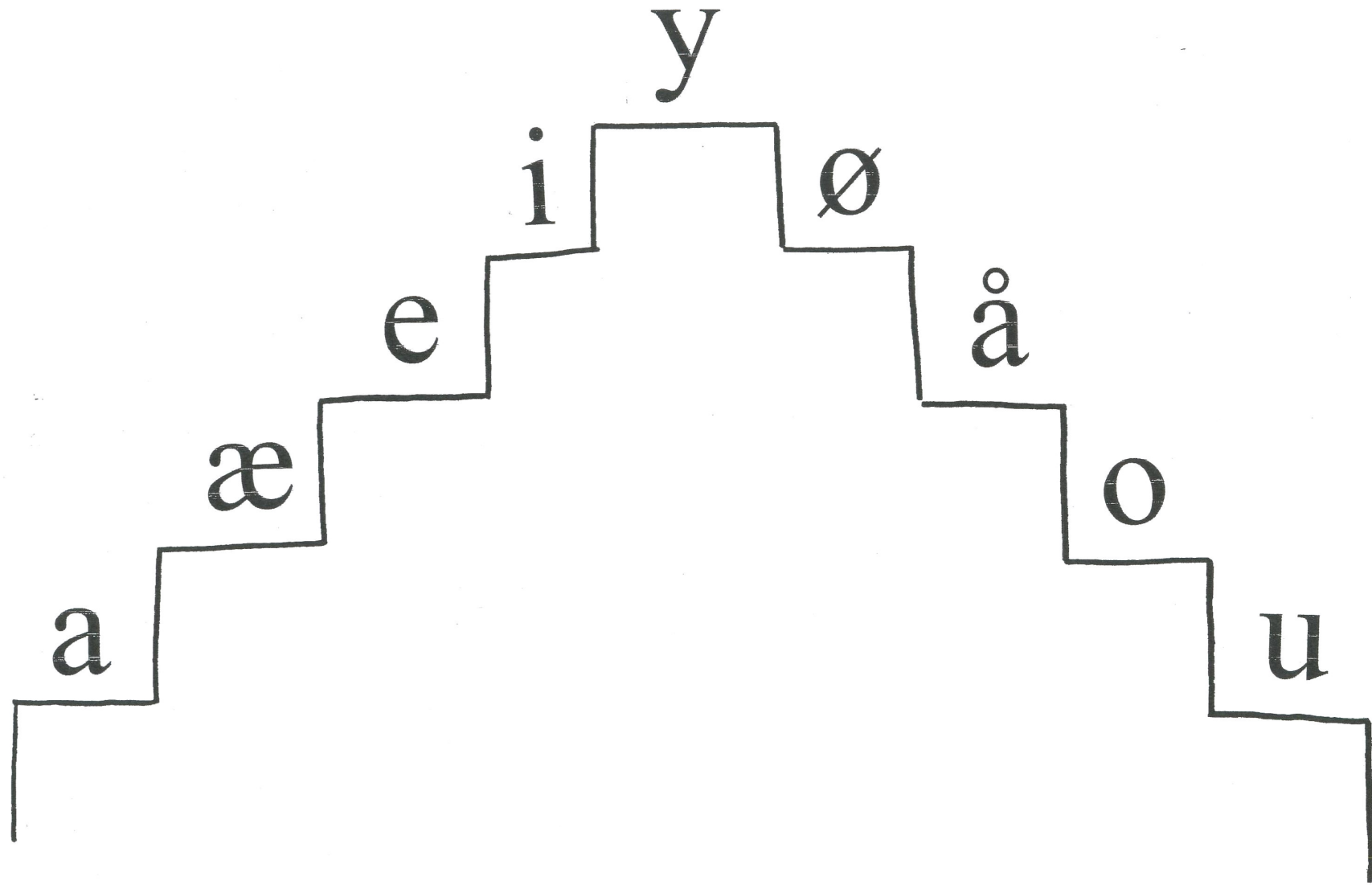
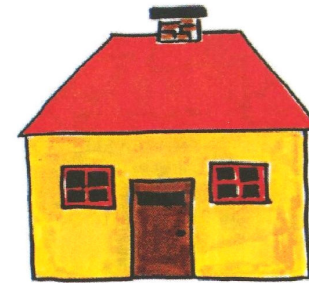
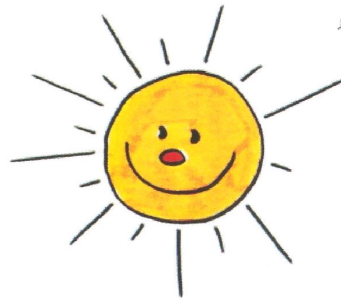
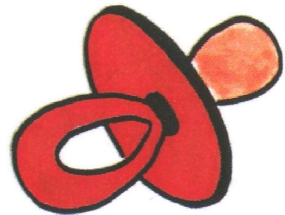
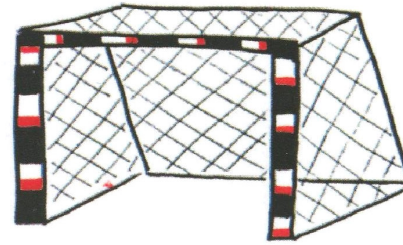
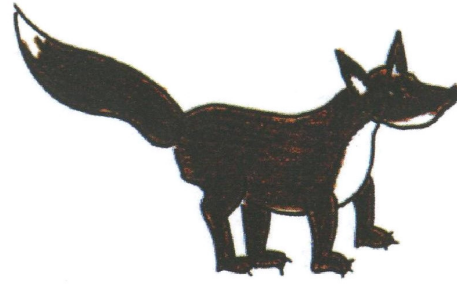
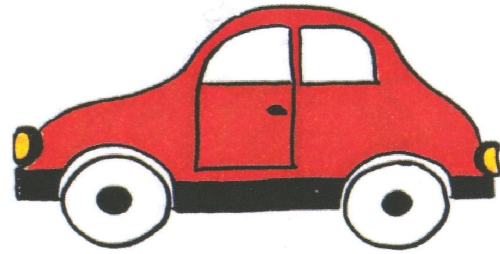


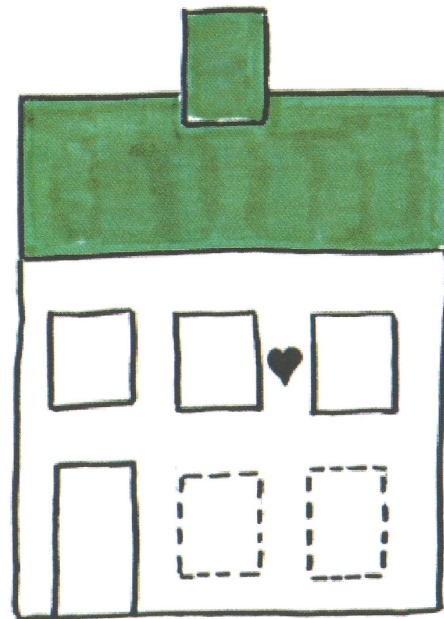
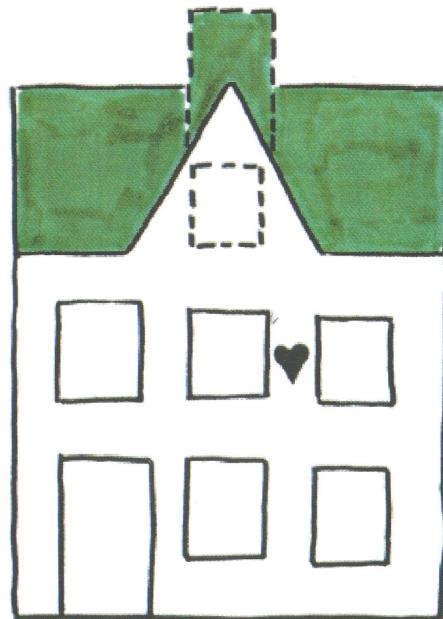
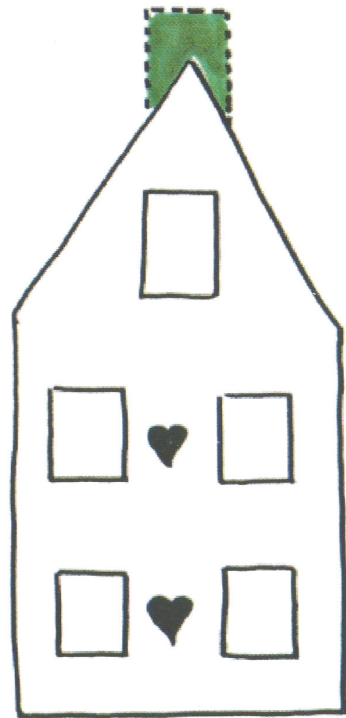
Evalueringsramme - elevhæfte

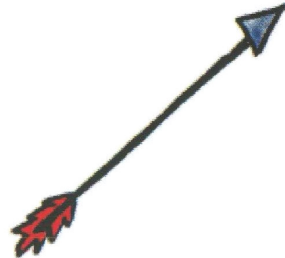
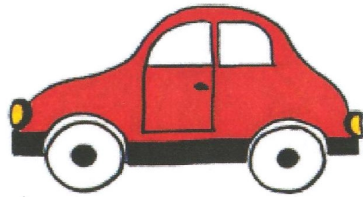
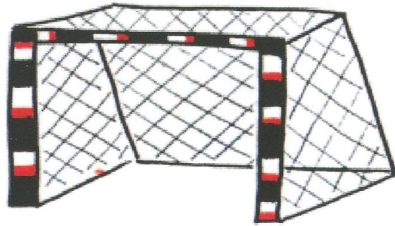
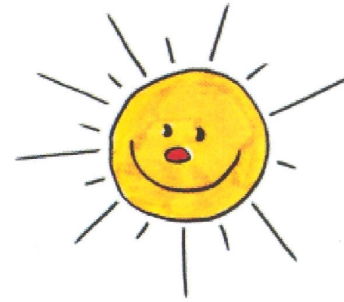
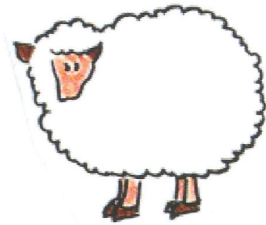
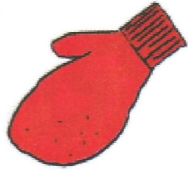
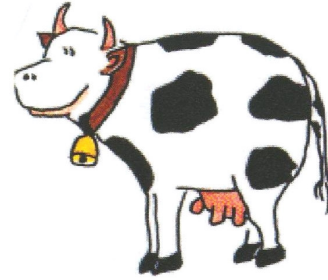
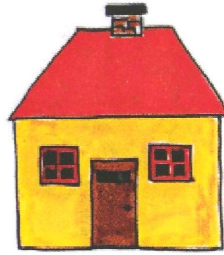
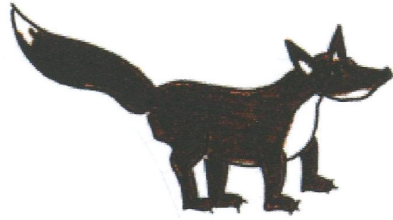


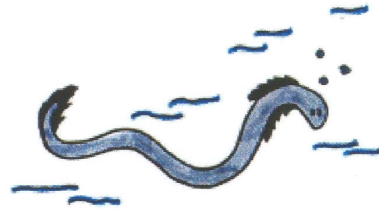
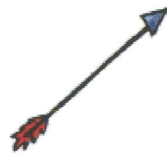
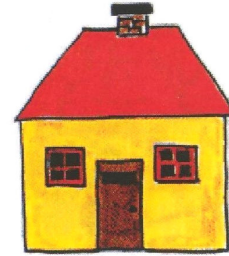
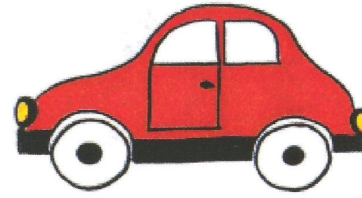
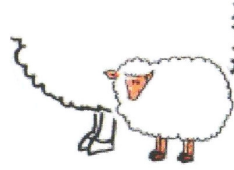
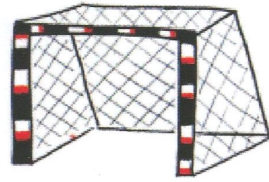


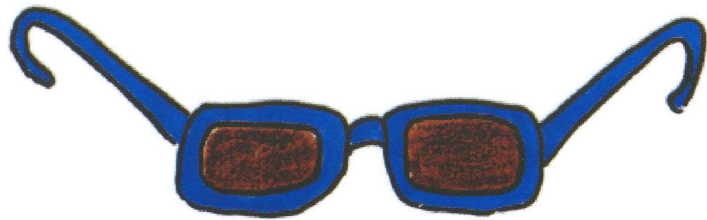


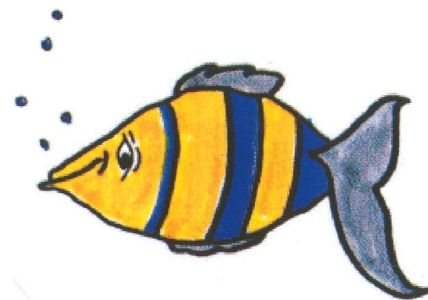
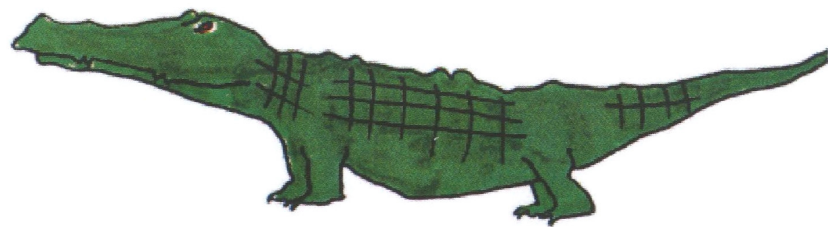


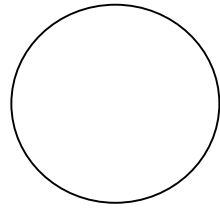
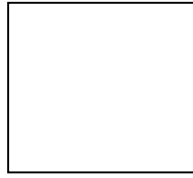




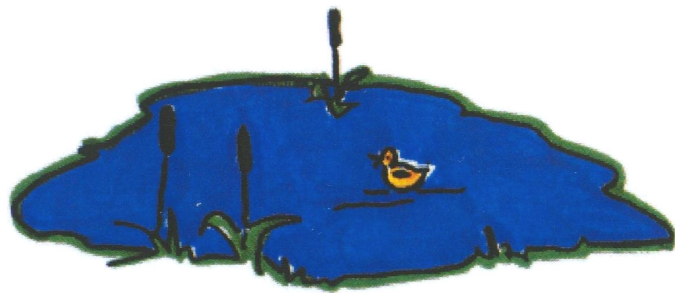
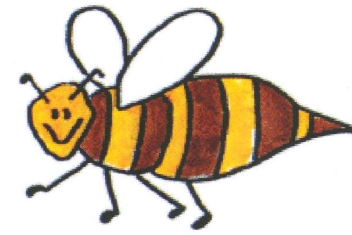
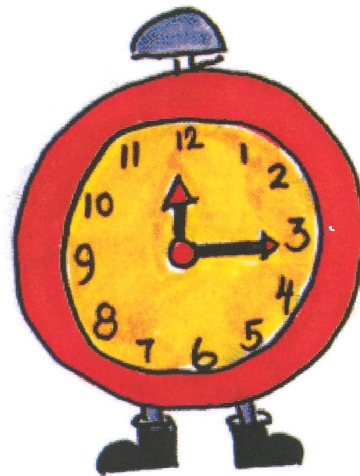
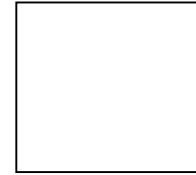
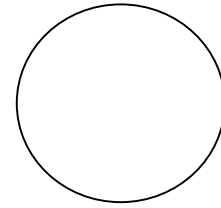


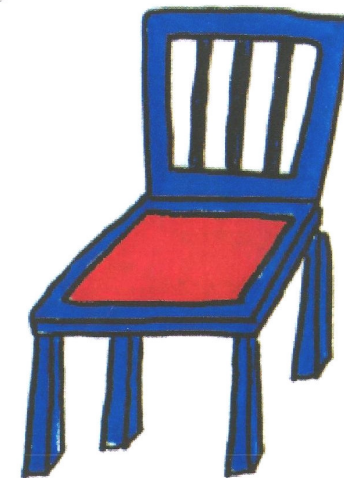
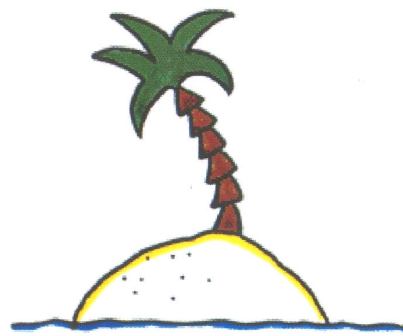
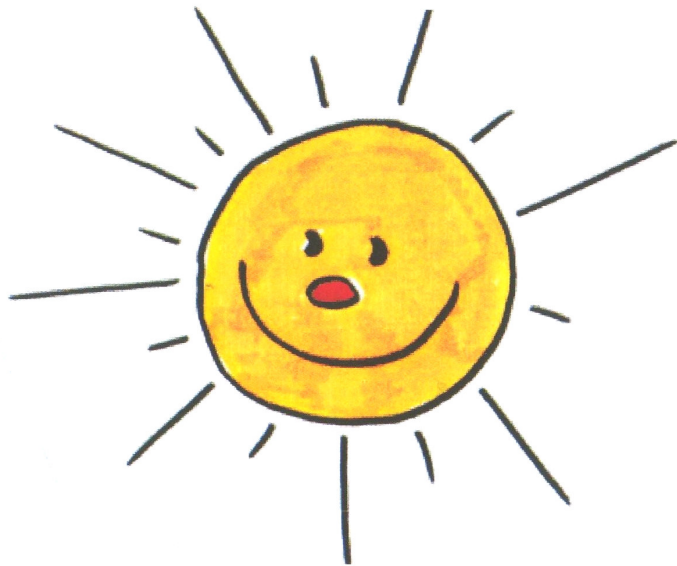
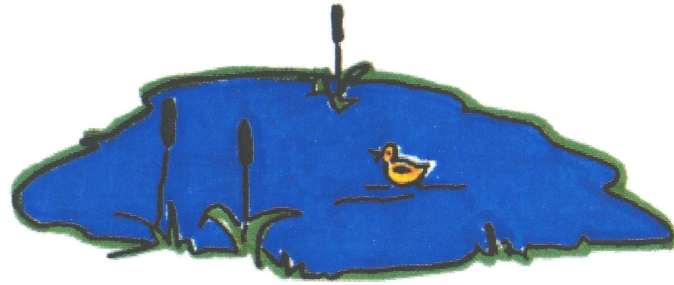


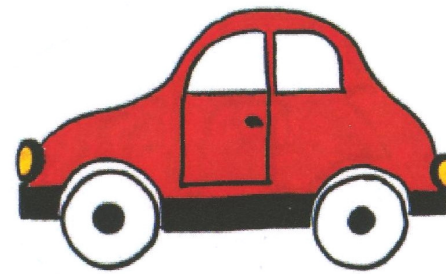
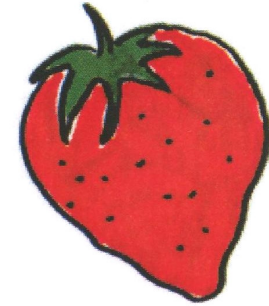
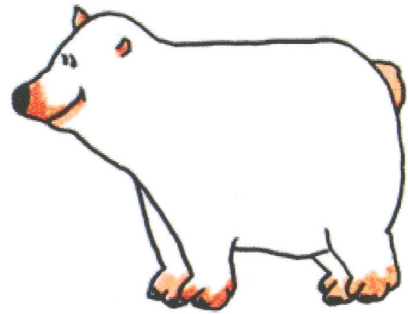


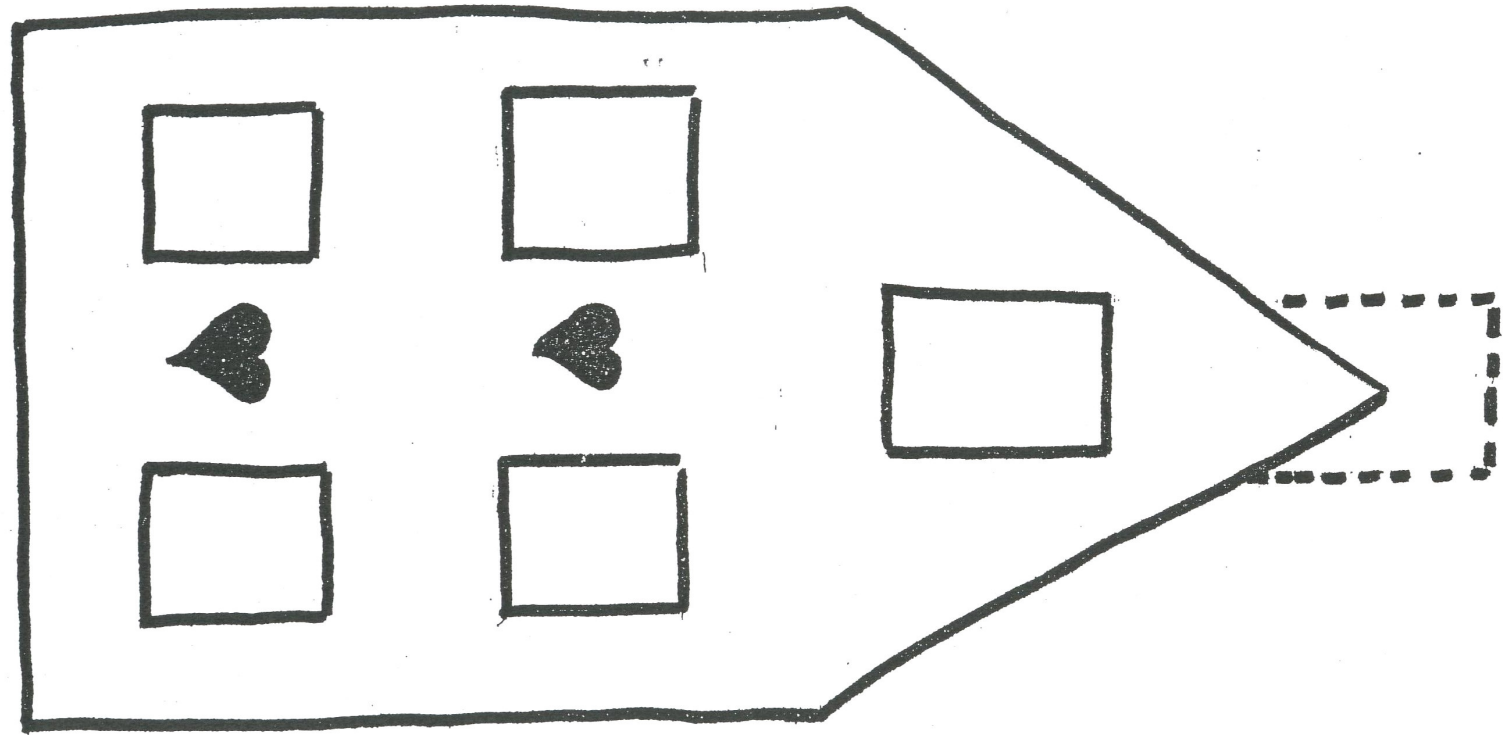


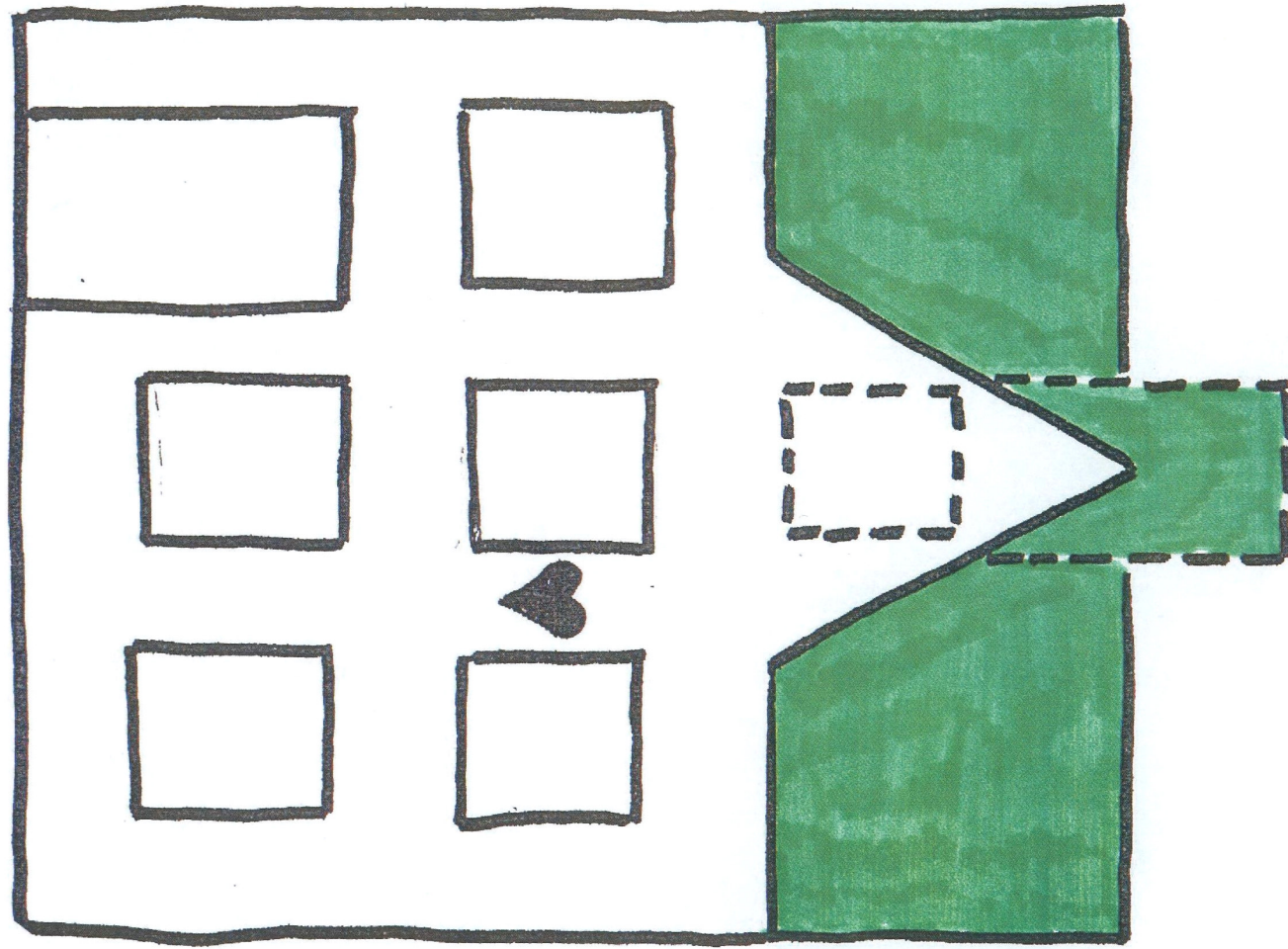
Eller

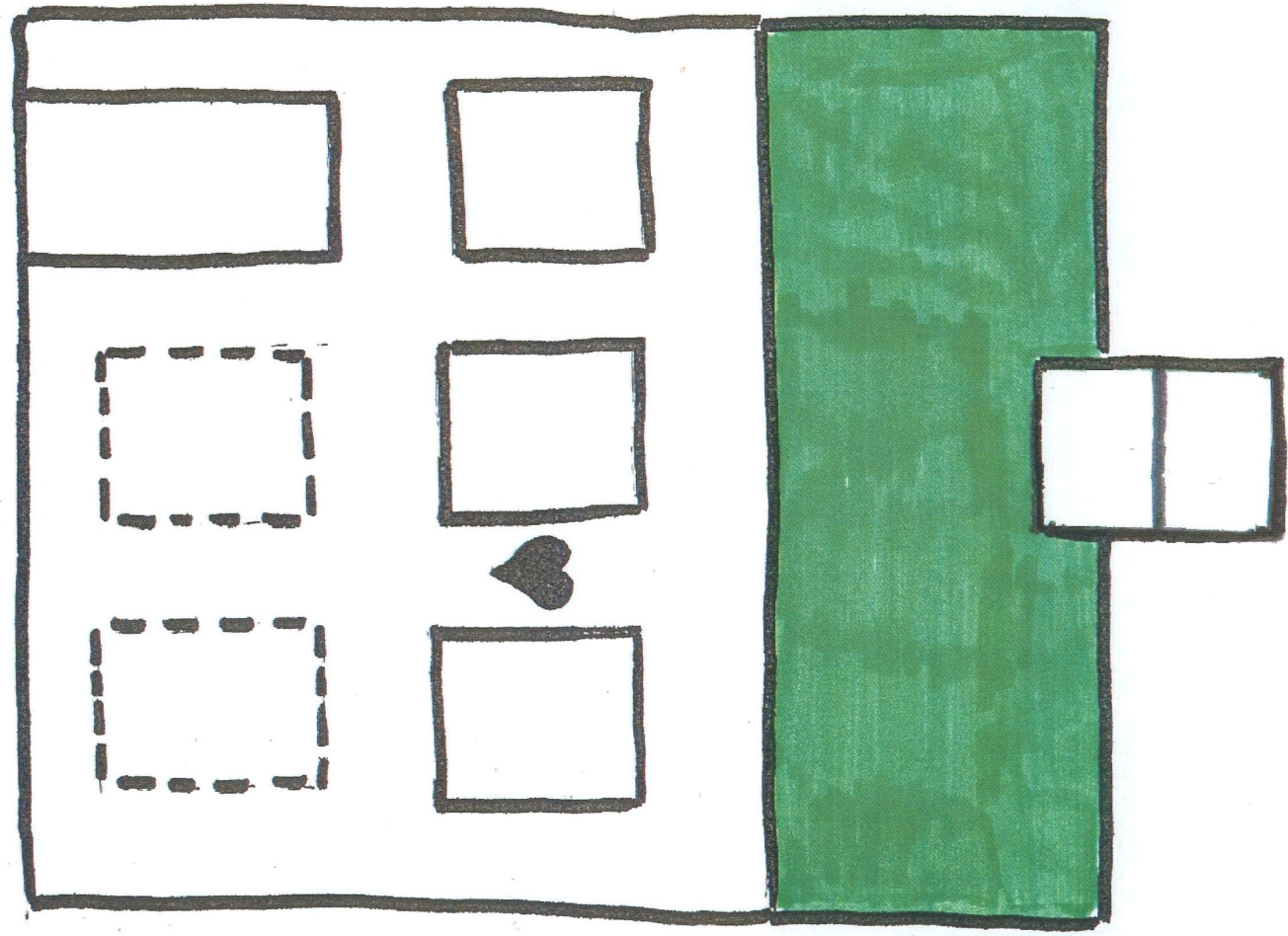












Lydstavetavlen:

○ = vokal

□ = = konsonant

1. □ ○

2. ○ □

3. □ ○ □

4. □ □ ○

5. ○ □ □

6. □ ○ □ □

7. □ □ ○ □

SE

se

MÅ

må

TO

to

FE

fe

VI

vi

VI TO VIL GÅ EN TUR

vi to vil gå en tur

NU MÅ DU FÅ EN IS

nu må du få en is

VI KAN LÆSE

vi kan læse